

## Interaction of Surface-active Fluorescence Probes with Bovine Serum Albumin

Tong Kuan XU<sup>1,2\*</sup>, Xing Hai SHEN<sup>2</sup>, Na LI<sup>2</sup>, Hong Cheng GAO<sup>2</sup>

<sup>1</sup> College of Chemistry Engineering and Materials, Dalian Institute of Light Industry,  
Dalian 116034

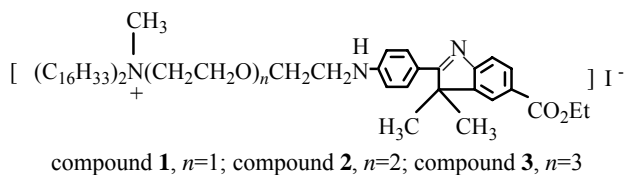
<sup>2</sup> College of Chemistry and Molecular Engineering, Peking University, Beijing 100871

**Abstract:** The binding between three surface-active substituted 3H-indole fluorescence probes and bovine serum albumin (BSA) in aqueous solution was studied using fluorescence quenching. The binding constants of 3H-indole molecules with BSA were obtained. According to the Förster resonance energy transfer theory, the distances between 3H-indole molecules and tryptophan of BSA were calculated. The results show that the oligoethoxyethylene chain of 3H-indole molecules is longer, the binding between them is stronger, the energy transfer efficiency is higher, and the distance between tryptophan and 3H-indole is nearer.

**Keywords:** Substituted 3H-indole quaternary ammonium molecule, bovine serum albumin, fluorescence resonance energy transfer.

The interaction between surfactants and proteins has been extensively studied. A lot of studies have been devoted to study the interaction of bovine serum albumin (BSA) with surfactants, in particular, anionic surfactants, such as sodium dodecylsulfate<sup>1-3</sup>. But only a few literatures reported on the effect of cationic surfactants association to proteins<sup>4</sup>

Scheme 1



Beijing Shuangluo Weishengwu Peiyangji Zhipinchang (electrophoresis grade). All other chemical reagents used in this study were analytical grade. Triply distilled water was used throughout the experiments. Tris-HCl buffer solution was used for the pH 7.4 adjustment. Absorption spectra were recorded on an U-3010 (Hitachi, Japan) spectrophotometer using 1 cm-path quartz cells. The slit was 5 nm. Fluorescence spectra ( $\lambda_{\text{ex}} = 280$  nm,  $\lambda_{\text{em}} = 343$  nm) were measured on a FL-4500 (Hitachi, Japan) spectrofluorimeter, and the band-pass was 5 nm. A mixture of 3H-indole solution, BAS standard solutions, and 1 mL  $0.5 \text{ mol} \cdot \text{L}^{-1}$  Tris-HCl buffer (pH 7.4) was diluted to 5 mL with 0.9% NaCl solution.

## Results and Discussion

### Binding constant of 3H-indole with BSA

In order to study the binding constant of 3H-indole with BSA, the fluorescence quenching method was used. According to the Stern-Volmer equation, in an appropriate concentration range, the relationship between the quenching efficiency ( $F_0/F$ ) and the concentration of quencher ( $[Q]$ ) obeys the following equation:

$$F_0/F = 1 + k_{\text{sv}} [Q] \quad (1)$$

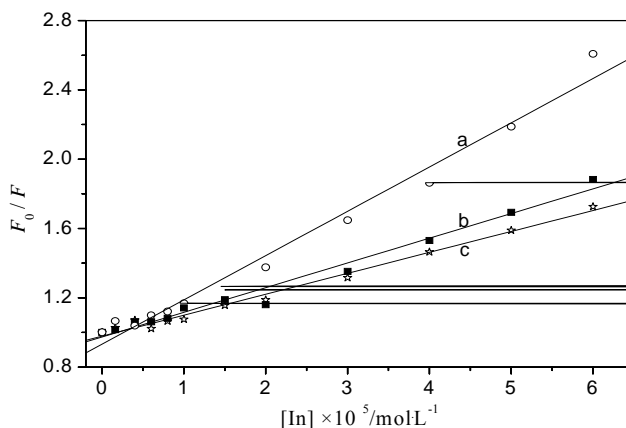
where  $F_0$  and  $F$  are the fluorescence intensities of the fluorophore in the absence and presence of the quencher, respectively, and  $k_{\text{sv}}$  is the Stern-Volmer quenching constant, corresponding to the slope of the plot of  $F_0/F$  vs.  $[Q]$ . The intrinsic fluorescence of BSA at 343 nm (excitation at 280 nm) is strongly quenched by 3H-indole. A reasonable linear relationship between the quenching efficiency and the concentration of 3H-indole in the range  $0\text{--}6.0 \times 10^{-5} \text{ mol} \cdot \text{L}^{-1}$  at room temperature is obtained (see **Figure. 1**). The results indicate that  $k_{\text{sv}}$  of compound **1**, **2**, **3** with BSA is  $1.20 \times 10^4 \text{ L} \cdot \text{mol}^{-1}$ ,  $1.42 \times 10^4 \text{ L} \cdot \text{mol}^{-1}$ ,  $2.56 \times 10^4 \text{ L} \cdot \text{mol}^{-1}$  respectively. So the oligoethyloxyethylene chain is longer, the binding constant is larger, and the binding between them and BSA is stronger.

### Förster energy transfer

Bound 3H-indole at ground state absorbs light emitted from BSA and converts to excited state, and then the rapid Förster energy transfer occurs to the nearby tryptophan. According to the Förster theory<sup>7-8</sup>, the efficiency of energy transfer is given by

$$E = 1 - F / F_0 = \frac{R_0^6}{R_0^6 + r^6} \quad (2)$$

**Figure 1** Stern volmer plot of  $F_0/F$  vs  $[In]$ .



a is compound **3**, b is compound **2**, c is compound **1**

where  $r$  is the distance between the donor and acceptor, and  $R_0$  is the Förster or critical transfer distance at which the energy transfer rate is 50%.

$$R_0^6 = \frac{8.8 \times 10^{-25} \kappa^2 \phi_D}{n^4} \frac{\int F_D(\lambda) \varepsilon_A(\lambda) \lambda^4 d(\lambda)}{\int F_D(\lambda) d(\lambda)} \quad (3)$$

where  $\kappa^2$  is the orientation factor related to the geometry of the donor-acceptor dipoles  $\kappa^2 = 2/3$  for random orientation as in fluid solution,  $n$  is the refractive index of the medium,  $\phi_D$  is the quantum yield of the donor in the absence of acceptor,  $F_D(\lambda)$  is the spectral distribution of the donor emission,  $\varepsilon_A(\lambda)$  is the extinction coefficient of the acceptor.

It is showed in **Table 1** ( $[BSA] = 1.0 \times 10^{-6} \text{ mol} \cdot \text{L}^{-1}$ ) that the oligoethyloxyethylene chain is longer, the energy transfer efficiency is higher, and the distance between tryptophan and 3H-indole is nearer. This regulation is also consistent with the trend of their correspond to binding constants.

**Table 1** Resonance energy transfer date for compound **1**, **2**, **3** and tryptophan of BSA

Compd.	J values / $10^{-14} \text{ cm}^3 \cdot \text{mol/L}$	critical transfer distance (nm)	energy transfer efficiency (%)	Distance (nm)
<b>1</b>	1.8	2.70	7.0	4.16
<b>2</b>	2.1	2.77	12.4	3.84
<b>3</b>	2.1	2.77	14.6	3.72

## Acknowledgment

The work was supported by the National Natural Science Foundation of China (Grant No. 90206020, 29901001).

## References

1. S. Deep, J. C. Ahluwalia, *Phys. Chem. Chem. Phys.*, **2001**, 3, 4583.
2. P. Hazra, D. Chakrabarty, A. Chakraborty, N. Sarkar, *Biochem. and Biophys. Res. Commun.*, **2004**, 314, 543.
3. T. Xu, X. Shen, H. Gao, *Spectroscopy and Spectra Analysis*, in press.
4. X. Diaz, E. Abuin, E. Lissi, *J. Photochem. Photobio. A: Chem.*, **2003**, 155, 157.
5. A. M. Sc Popowycz, Thesis, University, Montreal, **1991**.
6. T. Xu; X. Shen; H. Gao, *Chin. Chem. Lett.*, **2004**, 15 (1), 26.
7. J. H. Kleinschmidt, L. K. Tamm, *Biochemistry*, **1999**, 38 (16), 4996.
8. A. C. Ribou, J. Vigo, P. Viallet, JM. Salmon, *Biophys. Chem.*, **1999**, 81, 179.

Received 16 August, 2004